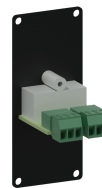
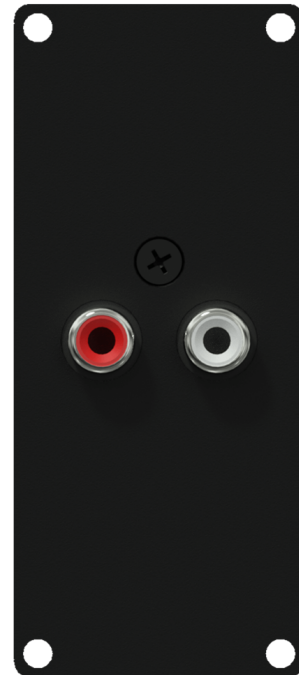


Highlights:

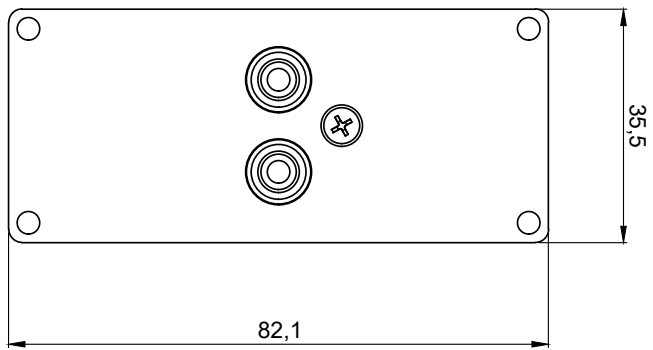
- Flexible system for system integration & connectivity
- Compatible with any CASY chassis
- Solderless connections
- 1.5 mm thick cold rolled steel frame
- Structured and scratch resistant black powder coating
- Assembly screws included


The CASY132 is a CASY module with two female RCA/ cinch connectors on the front side of the module and a terminal block connector on the back. This flexible structure for system integration & connectivity can easily be implemented in a wide variety of CASY chassis.



Product Features:

Dimensions	35.5 x 82.1 mm (W x H)		
Weight	0.044 kg		
Connection	2 x RCA female to 3-pin terminal block		
Module	Space	1	



	
CASY132	Product description: CASY 1 SPACE WITH 2 X RCA TO 2-PIN TB
Weight: 44 g	Outer dimensions: (w x h x d) 35,5 x 82,1 x 47
	Unit height: 2 HE