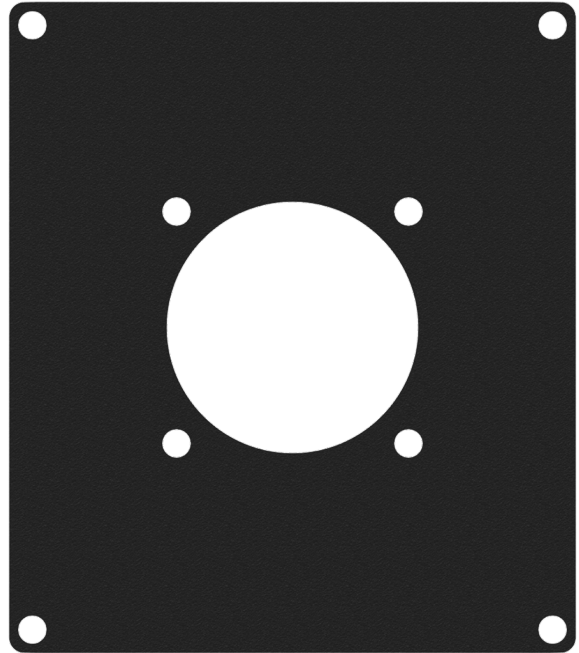


Highlights:

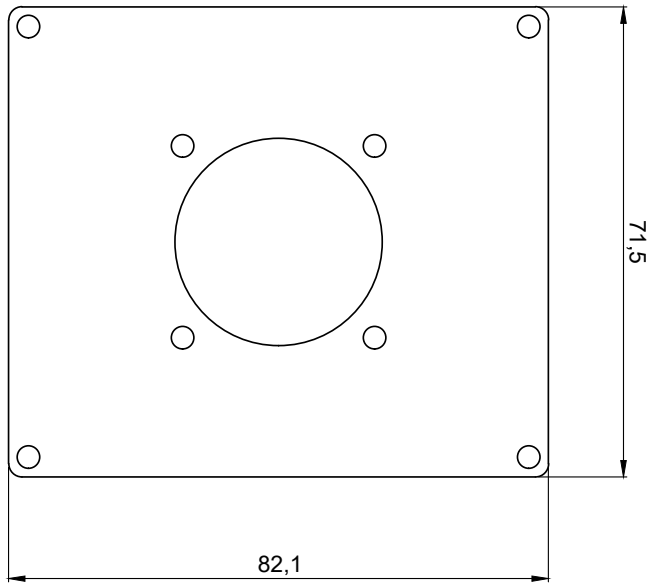
- Flexible system for system integration & connectivity
- Compatible with any CASY chassis
- Structured and scratch resistant black powder coating
- Assembly screws included
- 1.5 mm thick cold rolled steel plate


The CASY205 module features one hole to fit a G-size connector. This flexible structure for system integration & connectivity can easily be implemented in a wide variety of CASY chassis.



Product Features:

Dimensions	71,5 x 82,1 mm (W x H)	
Cut-out measurement	31 mm (Ø)	
Module	Space	2



	CASY205	Product description: CASY 2 SPACE COVER PLATE - 1 X G-SIZE CONNECTOR HOLE (31 MM)	Weight: TBA	Outer dimensions: (w x h x d) 71,5 x 82,1 x 1,5	Unit height: 2 HE